

The background of the entire page is a dark blue gradient. It features a central, semi-transparent globe with white lines representing global connections or data paths. The globe is set against a backdrop of vertical columns of white binary code (0s and 1s) that appear to be falling or scrolling down the page.

Manufacturing Matters **Our Impact in Illinois**

Advocate • Promote • Strengthen

Introduction

Manufacturing is integral to the story of Illinois and our nation. As the state's largest economic engine, Illinois manufacturers feed the world, make life saving products, power our homes and businesses, build our infrastructure, transport people and products around the globe, and provide for our nation's defense. Manufacturing makes the world a better place to live every single day.

The Illinois Manufacturers' Association is the unified voice of the manufacturing community in Illinois. The 592,000 women and men on Illinois factory floors today are the innovators and entrepreneurs, the builders and producers, and the dreamers and leaders of America.

We are the solution to many of the challenges facing our state if the right policies are put into place. Our elected leaders should choose policies that will build upon our best-in-class workforce and create a pipeline of qualified workers for the future. Let's create a better Illinois that is the best place to invest, the best place to innovate, and the best place from which to export.

Sincerely,

A handwritten signature in black ink, appearing to read "Mark Denzler". The signature is fluid and cursive, with a long horizontal stroke at the end.

Mark Denzler
President and CEO
Illinois Manufacturers' Association

Manufacturing Multiplier

For every
spent in
manufacturing **\$1.00**

\$1.89 is added
to the
economy.



**This is the highest
multiplier effect
of any economic sector
in the United States.**

Direct Impact

The manufacturing sector provides
592,200 jobs
in Illinois



More than **one in ten** Illinoisans work directly in the manufacturing sector.



\$52 BILLION
in wages and benefits

**\$304.8
BILLION**
in output



Manufacturing contributes
the single largest share
of the Gross State Product.

12.0
PERCENT



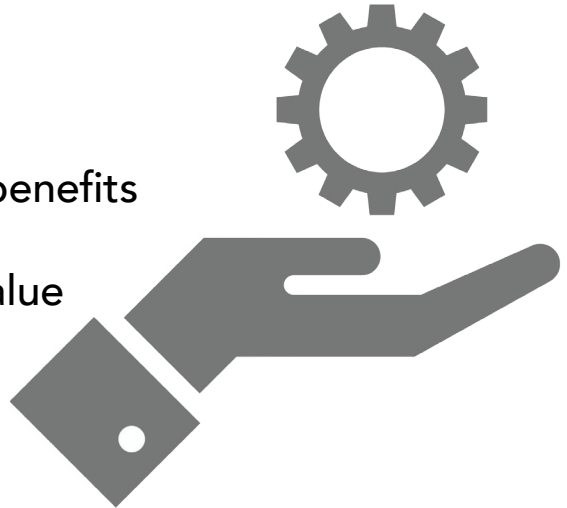
Taken alone, Illinois' manufacturing economy
would be the
largest economy
in the world.

63RD

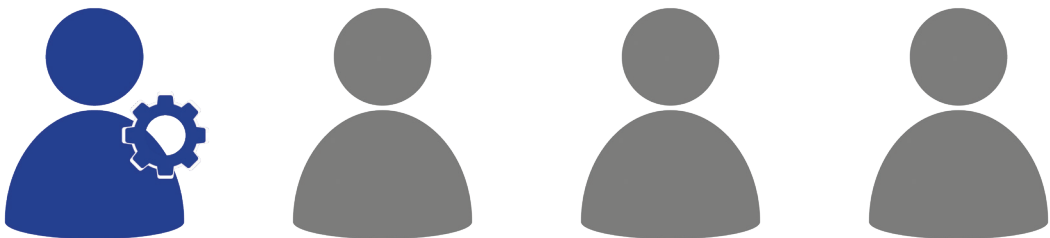
Indirect Impact

Manufacturing Supports:

- 1.5 million jobs
- \$113 billion in wages and benefits
- \$200 billion in enhanced value
- \$470 billion of output



Every manufacturing job supports **1.6 other jobs** in Illinois.

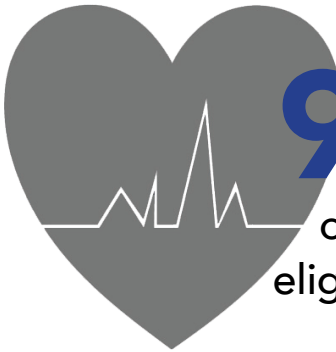


Combined, **nearly one in four** Illinoisans work in manufacturing or related jobs.

Wages & Benefits

\$88,691

average income per
manufacturing worker



92 PERCENT

of manufacturing employees are
eligible for health insurance benefits.

(Kaiser Family Foundation)

Manufacturing companies provide high-paying, middle-class jobs for Illinois workers. The women and men working in Illinois factories earn more than \$89,000 in wages and benefits, which is significantly higher than nearly every other sector including construction, finance and insurance, retail, and transportation and warehousing.

Top 15 Sectors by Manufacturing GDP

NAICS Industry	Employment (Thousand Persons)	Output (Billion \$)
Total Manufacturing	592.2	\$304.8
Food Products	93.0	\$59.2
Chemical Manufacturing	43.0	\$48.1
Machinery Manufacturing	71.4	\$32.0
Transportation Equipment	42.2	\$30.7
Fabricated Metal Products	91.7	\$24.2
Petroleum & Coal	5.7	\$22.9
Plastics & Rubber Products	43.5	\$15.9
Computer & Other Electronics	27.7	\$11.1
Miscellaneous Manufacturing	31.0	\$10.0
Primary Metal Manufacturing	18.0	\$9.5
Electrical Equip. & Appliances	22.5	\$9.2
Paper Manufacturing	19.0	\$9.1
Beverage & Tobacco	8.1	\$5.9
Non-Metal Mineral Products	14.9	\$5.5
Printing & Related Products	30.2	\$5.4
Furniture & Related Products	13.2	\$2.8

Top 15 Counties by Manufacturing Employment

County	Employment (Thousand Persons)	Output (Billion \$)	% of County GDP (Direct)
Cook	192.5	87.5	7.1%
DuPage	56.0	21.3	9.3%
Lake	50.7	35.7	27.5%
Kane	34.2	13.5	16.7%
Winnebago	24.2	9.1	23.4%
Will	22.4	15.7	16.5%
McHenry	15.3	5.5	17.2%
Peoria	12.1	7.7	22.7%
Macon	11.3	15.8	40.0%
Madison	9.9	8.8	21.6%
Tazewell	9.3	5.5	30.9%
Rock Island	8.8	3.7	12.6%
Champaign	6.8	0.3	6.8%
St. Clair	6.2	0.3	7.0%

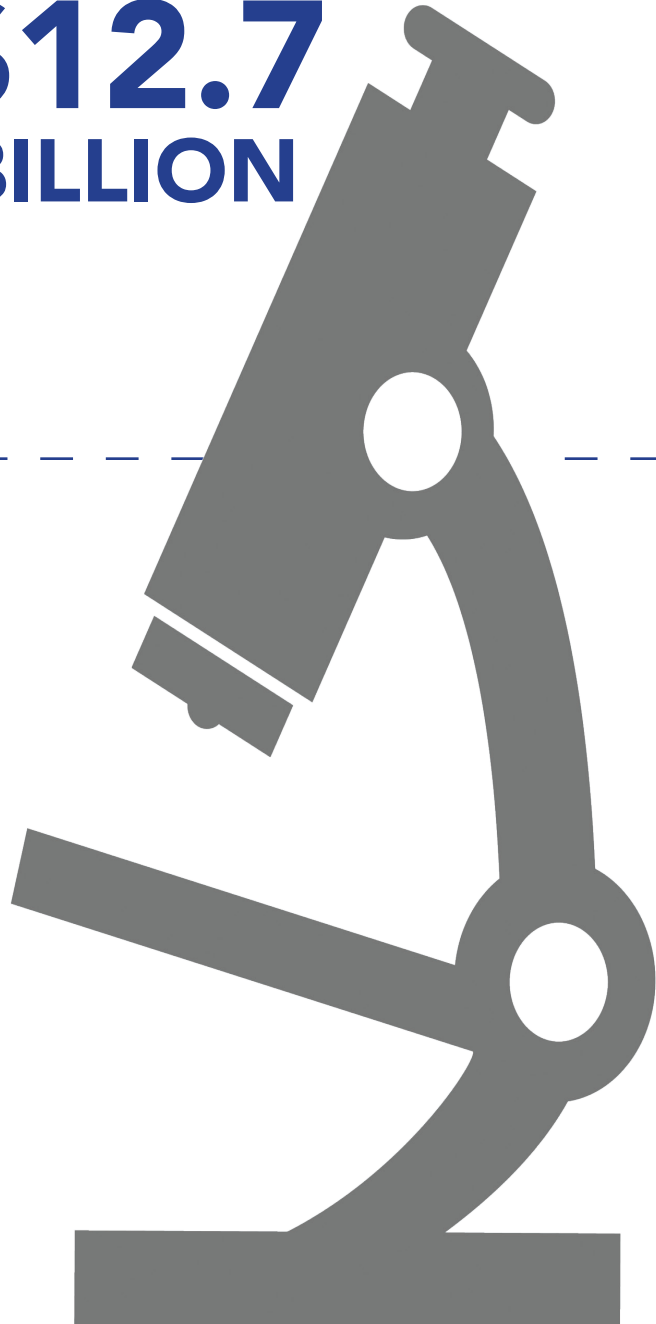
Research & Development

The private sector conducts
in R&D activity annually.

**\$12.7
BILLION**

**MANUFACTURERS
DRIVE INNOVATION,**

performing more than
of private sector R&D. **70
PERCENT**



Exports



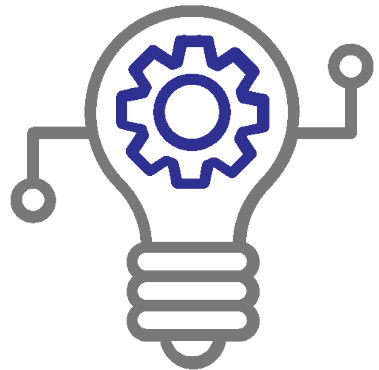
Illinois exports totaled

**\$65.2
BILLION**

in 2017.

**93
PERCENT**

of Illinois exports are
manufactured goods
and products.



95 PERCENT

of consumers live outside
the United States.

Trade is important!

We are proud to represent Illinois manufacturers and help you with advocacy, education, and growth.

To join the Illinois Manufacturers' Association, please visit ima-net.org, email ima@ima-net.org, or call (217) 522-1240.



Advocate • Promote • Strengthen



facebook.com/ILManufacturers



twitter.com/IMA_Today



youtube.com/IMAVideoReferenceLibrary

*For a full copy of the 2019 report, please visit www.ima-net.org/2019economicanalysis.
Copyright (C) 2019 Illinois Manufacturers' Association. No part of the publication may be reproduced, distributed, or transmitted in any form without permission or attribution.*